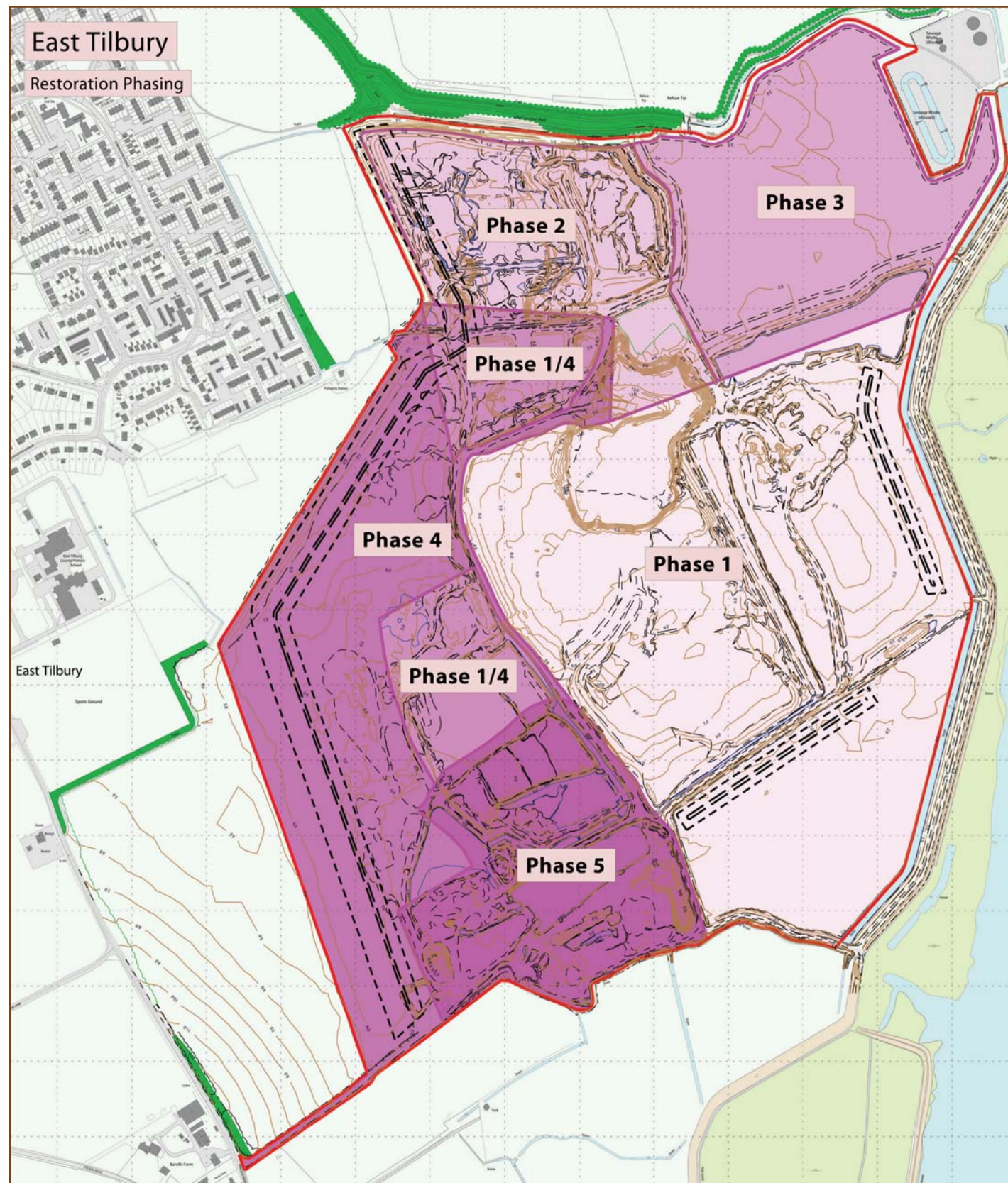


# East Tilbury Inert Waste Disposal Site

## 1.10 Restoration Phasing



## 1.11 Restoration Phasing - Overview

The drawing opposite shows the main Phasing Blocks for the progressive infilling and restoration of the East Tilbury site. The area has been divided into Five distinct Phases which are generally in line with the phases as depicted within the planning application. The Phasing as shown opposite is based on a detailed assessment of the cut and fill balances of waste and other available material suitable for the final restoration of the site. The soil restoration balance is shown in the Table below at Section 1.12. This assessment is based on a detailed site survey undertaken in December 2010 and supercedes all previous volumes and calculations.

Phase 1 includes the eastern half of the closed tip area (Void B), as well as the area to the south known as the High Tide Roost.

Phases 1/4 represent two areas that will be generally restored to formation levels, but not restored with soils either due to the requirement to keep open the main internal haul road through the centre of the site or to allow the stockpiling of restoration material for adjacent areas.

Phases 2 and 3 represent the existing and future tipping voids.

Phase 4 represents the completion of the western half closed tip areas following restoration of phases 2 and 3.

Phase 5 represents the final restoration of the plant site and ancillary areas to the south of the site.

## 1.12 Restoration Phasing - Restoration Volumes

TOTAL SOILS REQUIRED				
Description	Areas	Topsoil	Subsoil	Sand
Phase 1 (Void B - East)	267,000m <sup>2</sup>	22,000m <sup>3</sup>	52,000m <sup>3</sup>	8,000m <sup>3</sup>
Phase 2 (Void C - West)	82,600m <sup>2</sup>	21,300m <sup>3</sup>	19,800m <sup>3</sup>	56,000m <sup>3</sup>
Phase 3 (Void C - East)	138,900m <sup>2</sup>	35,700m <sup>3</sup>	33,200m <sup>3</sup>	80,000m <sup>3</sup>
Phase 4 (Void B - West)	239,500m <sup>2</sup>	4,000m <sup>3</sup>	15,000m <sup>3</sup>	38,000m <sup>3</sup>
Phase 5 (Void A)	108,200m <sup>2</sup>	35,000m <sup>3</sup>	13,000m <sup>3</sup>	68,000m <sup>3</sup>
<b>TOTAL OVERALL SOILS</b>	<b>836,200m<sup>2</sup></b>	<b>118,000m<sup>3</sup></b>	<b>133,000m<sup>3</sup></b>	<b>250,000m<sup>3</sup></b>
			<b>251,000m<sup>3</sup></b>	<b>501,000m<sup>3</sup></b>

SCREENING BANKS				
Description	Topsoil	Subsoil	Sand	Totals
Eastern Screen Bank	22,000m <sup>3</sup>			22,000m <sup>3</sup>
Western Screen Bank	86,000m <sup>3</sup>	66,000m <sup>3</sup>	8,000m <sup>3</sup>	160,000m <sup>3</sup>
HTR Bank		15,000m <sup>3</sup>		15,000m <sup>3</sup>
<b>TOTAL OVERALL SOILS</b>	<b>108,000m<sup>3</sup></b>	<b>81,000m<sup>3</sup></b>	<b>8,000m<sup>3</sup></b>	<b>197,000m<sup>3</sup></b>

Legend			
	Site Boundary		Restoration Phase 3
	Phased Waste Infill Areas		Restoration Phase 1/4
	Restoration Phase 1		Restoration Phase 4
	Restoration Phase 2		Restoration Phase 5